



## Role of Sperm DNA Integrity in Fertility

**Dr. Abdul Hafeez Baloch**

Mohi-ud-Din Islamic Medical College

**Dr. Abdul Rashid Baloch**

Suleiman Roshan Medical College

Tandoadam

**Dr. Najma Hafeez Qureshi**

Mohi-ud-Din Islamic Medical College

---

### Abstract

The integrity of sperm DNA is important for the success of natural or assisted fertilization, as well as for the normal development of the embryo, fetus and baby. DNA integrity analysis is a better diagnostic and prognostic marker of sperm reproductive potential. Conventional semen analysis focuses on sperm concentration, viability, motility and morphology and has been shown to be a poor indicator of reproductive potential and pregnancy outcome. Some research has shown that when the husband's damaged sperm DNA exceeds 30%, the couple has a very low natural fertility potential. There are several methods available for assessing sperm DNA integrity, which is considered a better marker of male fertility potential than conventional semen parameters. In addition, checking the integrity of sperm DNA may become an important part of the assessment for couples seeking assisted reproduction techniques, such as intracytoplasmic sperm injection (ICSI). Finally, the effects of cryopreservation and preparation techniques on sperm DNA integrity are summarized. The basic principles, the outline of the methodology, the advantage, the disadvantage, the clinical importance of each technique and the implications of these tests were discussed. The logistics of each test are also presented in terms of the resources and equipment available in an andrology laboratory, the feasibility of performing these tests in the routine diagnosis of infertile men,

and the opportunities and challenges that DNA testing offers in determining male fertility.

**Keywords:** *Sperm DNA, ICSI, Embryo, Fertilization, DNA integrity tests, Comet, TUNEL, SCSA, Reproduction technique, Semen analysis.*

### Introduction

Sperm DNA integrity is an important parameter of sperm quality in the prognosis of infertility and in the outcome of assisted reproductive procedures. In a basic andrology laboratory the assessment of the sperm quality relies on the World Health Organization (WHO) guidelines, which are poor predictors of reproductive outcome. In semen analysis, according to WHO guidelines sperm parameters as concentration, motility and morphology are emphasized. The conventional analysis establishes qualitative as well as quantitative threshold values for above mentioned parameters. Although fertile men as a group have higher mean sperm parameters (concentration, motility, and morphology) than infertile men, there is significant overlap between fertile and infertile men. Approximately 15% of infertile men have a normal spermogram <sup>[1]</sup>. Hence routine semen analysis may describe some aspect of the function of testis and sperm but they do not address the functional competence of the sperm attributed DNA integrity.

Supplementing the parameters referred in the WHO guidelines by additional tests of sperm function as sperm-zona pellucida binding and sperm-penetration has not improved the IVF success rate significantly and helped nominally in clinical decision on treatment of patients with infertility. In addition, sperm function test do not have clinical value in ICSI since sperm bypass the zona pellucida and oolemma by injecting a single sperm directly into cytoplasm of oocyte. The use of sperm selection method by motile sperm organellar morphology examination (MSOME; done under 6600X) as an alternative to sperm function tests for

ICSI patients <sup>[2]</sup> is unreliable due to the structural variability of human sperm and the observer subjectivity involved in such assessment. Due to this, the clinician cannot be sure that the sperm cells selected by MSOME for insemination represent those with the best reproductive potential. Moreover small sample size and limited number of studies weaken the credential of this technique as a tool for assessment of reproductive capacity of the sperm and therefore there exists lacunae in the diagnostic evaluation of male infertility for IVF/ICSI and infertility in general.

Recent studies have highlighted the significance of sperm DNA integrity as an important factor which affects functional competence of the sperm. Different assays have been developed and applied in research laboratories to assess sperm DNA damage, which is more clinically informative and relevant. But so far very few andrology laboratories have implemented DNA integrity assessment as a part of routine semen analysis. Assessment of sperm DNA damage in patients opting for ART is crucial since these advanced assisted conception techniques bypass the natural selection barriers of conception and therefore sperm with high DNA damage may increase the possibility of transmitting the genetic aberrations to the conceptus and may affect the fetal and post natal development <sup>[3]</sup>. Such transfer of aberrant sperm genome may result in early pregnancy loss or birth of offspring with major or minor congenital malformation or even cancer.

The percentage of sperm with fragmented DNA is comparable in idiopathic infertile men having normal sperm parameters and in idiopathic infertile men with abnormal sperm parameters, which is significantly higher in both groups as compared to fertile controls. Thus standard sperm parameters (SSP) are poor predictors of functional competence of sperm. Recent study by Venkatesh et al., 2019 and Lewis et al., 2016 showed that there is no correlation between oxidative stress (OS) or DNA damage with SSP. So there is a need to have specific diagnostic tests for the assessment of OS and DNA damage

Studies both, in vitro and in vivo have shown that there is a negative correlation between sperm DNA integrity and fertility. DNA damage is associated with poor embryo development, decreased implantation, and poor pregnancy outcome . Birth

of offspring with use of sperm with DNA damage results in increased chances of morbidity and childhood cancer <sup>[4]</sup>.

A study by Bungum et al., 2014 has shown that 30% of men opting for ART have high percentage of sperm with DNA breaks. In our earlier studies it was observed that in male partners of couples experiencing abortions 47.7% of sperm had high DNA damage, where as in infertile men with severe sperm pathologies 40.06% sperm had damaged DNA. Also these men had high levels of free radicals (reactive oxygen species; ROS) as detected by chemiluminescence, which is one of the leading cause of DNA damage and such men may benefit immensely by early diagnosis and prompt antioxidant treatment <sup>[5]</sup>.



The chromatin restructuring during spermiogenesis makes the sperm chromatin transcriptionally and translationally inert as a result of which the DNA repair capacity of the sperm is limited. The breaks in the DNA that may have escaped repair prior to compaction or damage occurring after chromatin remodelling has been completed are delivered to the oocyte. Accumulated products of oxidative DNA damage as ethenonucleosides impair nucleotide excision repair (NER) in oocyte .Consequently, the biological effect of abnormal sperm chromatin structure depends on both, the magnitude of sperm chromatin damage and the capacity of the oocyte to repair it after fertilization.

The etiology of sperm DNA damage is multifactorial. Sperm DNA fragmentation may result from aberrant chromatin packaging during spermatogenesis defective apoptosis excessive reactive oxygen species (ROS) production decreased seminal antioxidants. External factors such as drugs, pollution, cigarette smoking, fever, xenobiotics, high testicular temperature, varicocele, and advanced age have also been associated with increased sperm DNA damage <sup>[6]</sup>.

A variety of assays have been developed to measure sperm DNA damage. These assays can be broadly categorized into two types. The first category include assays where DNA fragmentation is measured directly by incorporating probes at the site of damage, which detect actual DNA strand breaks. The second category includes assays which utilize the property of fragmented DNA to easy denaturation under certain conditions. Since nicked DNA denatures more easily than double-stranded DNA this approach measure the susceptibility of DNA to denaturation—that is, the formation of single-strand DNA from native double-strand DNA. Sperm chromatin dispersion test (SCD), Single cell gel electrophoresis (SCGE) or comet assay, sperm chromatin structure assay (SCSA), acridine orange staining are few examples, where the chromatin is subjected to denaturation treatment and then the DNA damage is quantified [7]. It is worthwhile to mention that in the available literature little information can be found regarding the differential assessment of mitochondrial DNA fragmentation and the nuclear DNA fragmentation in the sperm. Since the treatment of idiopathic infertility is mostly empirical therefore clinical validation and routine application of sperm DNA fragmentation assay in the workup of infertile men may help to decide the suitable therapeutics in these men and also minimize the risk of iatrogenic transmission of abnormalities to the offspring conceived through advanced assisted conception techniques.

### **Cause of sperm DNA damage**

DNA integrity is defined as the absence of both single strand or double strand and breaks absence of nucleotide modifications in the DNA. The loss of integrity in sperm DNA may occur at any level from the transformation of the spermatogonial germ cells to the ejaculated sperm, thereby the DNA damage may be present in the testicular sperm, epididymal sperm or the ejaculated sperm.

In transformation of mitotic spermatogonia to spermatocytes in meiosis, the DNA double strand breaks (DSB's) are introduced and normally ligated after the crossing over. These breaks are temporary and are repaired in a healthy sperm but if unrepaired, they may lead to increased DNA fragmentation in the mature ejaculated sperm. During epididymal maturation, the protamine disulfide cross linking is completed, conferring a

highly compact structure to sperm chromatin. If the disulphide cross linking is incomplete it may lead to suboptimal compaction and therefore high degree of DNA fragmentation. DNA damage incurred during sperm transit and storage in epididymis or post ejaculation cannot be repaired by sperm because post spermiogenesis there is negligible transcription and translation [8].

As the sperm pass through epididymis it is exposed to ROS (free radicals), which are released by leukocytes, immature sperm or by dysfunctional mitochondrial metabolism. The electron loss from mitochondrial electron transport chain (ETC) in sperm leads to mt DNA mutations which further enhances ROS production and leads to mitochondrial and nuclear DNA damage. During the sperm maturation most of the antioxidants which are localized in the cytoplasm are lost so, antioxidant defense against the free radicals is mainly conferred by the seminal plasma. And if the seminal antioxidants are also compromised the sperm has a higher susceptibility to oxidative stress induced DNA damage. The abortive apoptosis of fas expressed cells also contributes to sperm with DNA damage in the ejaculate. This dysfunctional apoptosis is responsible for presence of defective sperm in fertile men [8].

The damage in sperm DNA may not always be in the form of single or double strand breaks. The oxidizing capacity of ROS, produces nucleotide modifications or base loss. These cause aberrations in the chromatin packing and expose the genome to further oxidative insult The most common type of nucleotide modification is 7,8-dihydro 8-oxo 2 deoxyguanosine (8-OH dG) an oxidative adduct of guanosine. If sperm with DNA adducts are successful in achieving a pregnancy, paternally originating errors in DNA replication, transcription and translation can occur, potentially predisposing the offspring to a number of cancers and other degenerative disorders. Moreover, with time such base modifications may also lead to discrete DNA strand breaks .Reduced expression of molecular factors HspA2 and p53 have also been shown to be associated with increased DNA damage. In an unpublished study from our laboratory increased number of non synonymous sequence variations were detected in p53 gene in infertile men [8].

These mechanisms of DNA damage are in vivo but the clinically induced DNA damage in ART

procedures are an additional concern for the in vitro conceptions. Assisted conception procedures as ICSI has made the fertilization of oocyte possible by an immature testicular sperm, which are more vulnerable to damage than that of ejaculated sperm and have an incomplete methylation imprint. Since these sperm do not have the complete disulphide cross linking and even the epigenetic programming is incomplete this increases the risk of genetic and epigenetic defects in children conceived through these techniques. Also these techniques require sperm preparation and processing in which the seminal plasma is removed by centrifugation and washing which makes sperm more vulnerable to oxidative damage [9].

### **Fundamentals of DNA integrity analysis**

Assays used to quantify DNA fragmentation are based on different principles. These assays in general utilize the difference in the properties of fragmented and non fragmented DNA. In assays utilizing chromatin probes, DNA without nicks which is in supercoiled state has greater affinity for intercalating dyes as acridine orange because this reduces the free energy of torsion stress. On the contrary, the affinity for intercalation is low in relaxed DNA and is lost in fragmented DNA. The binding of dyes to the phosphate residues of fragmented DNA is observed when intercalation of dyes does not take place. The accessibility of DNA specific dyes is decreased by the protamination of sperm DNA since the positive charge on protamines neutralizes the negative charge of DNA. Therefore the intensity of fluorescence is low in sperm as compared to fluorescence intensity of round spermatid [9].

In assays, where the removal of nuclear proteins (eg by acid extraction/denaturation) is done the staining potential of DNA is dependent on the steric structure of probe and the interaction of probe with the substrate DNA [10].

### **Tests for sperm DNA damage quantification**

#### **Acridine orange (AO) test**

Acridine orange is a nucleic acid specific, fluorescent, cationic dye. It interacts with DNA by intercalation and by electrostatic interaction with RNA or single stranded DNA. When bound to ds

DNA it has an excitation maximum at 502 nm and an emission maximum at 525 nm (green). When it associates with RNA or single stranded DNA produced by single stranded DNA breaks, the excitation maximum shifts to 460 nm (blue) and the emission maximum shifts to 650 nm (red). This metachromatic shift is utilised in DNA integrity assays for the quantification of DNA damage by AO test. During the assay, mild acid treatment denatures DNA with single stranded or double stranded breaks. Acridine orange binds to ds DNA (non denatured) to produce green fluorescence while binding of acridine orange to single stranded DNA regions/ss DNA breaks produces red fluorescence. The measured parameter is number of cells with red fluorescence which is an approximation of DNA damaged sperm in the sample.

#### **Sperm chromatin structure analysis (SCSA)**

The sperm chromatin structure assay (SCSA) is the flow cytometric version of acridine orange staining. Both SCSA and Acridine Orange Test measure the susceptibility of sperm nuclear DNA to acid-induced conformational transition in situ by quantifying the metachromatic shift of AO fluorescence from green (native DNA) to red (denatured or relaxed DNA). Compared to visual counting of red and green cells in AO test, in SCSA the red-green fluorescence is detected using a flow cytometer. Though the technique has high statistical robustness and inter- and intra-laboratory reproducibility, the assay requires a flow cytometer and a dedicated software. The ratio of red fluorescence to the total (sum of red and green fluorescence) gives the DNA fragmentation index of the sperm sample being analyzed unlike in AO test which gives the approximation of DNA in terms of number of damaged cells.

#### **Aniline blue discoloration**

Aniline blue is an acidic dye which has a greater permeability/affinity for proteins in the loose chromatin of sperm nucleus. This is due to the presence of the residual histones and increased accessibility of the basic groups of the nucleoprotein. Increased aniline blue staining of sperm indicates loose chromatin packing.

The technique is simple, inexpensive and requires a simple bright field microscope for the analysis. Though the results of aniline blue staining

correlates well with AO test<sup>[11]</sup>, heterogenous slide staining is a prominent drawback of this technique.

### **Chromomycin A3 (CMA3) staining**

CMA3 is a fluorochrome specific for GC-rich sequences and interacts with DNA at the same site at which protamine binds with DNA. The extent of staining is related to the degree of protamination of mature spermatozoa. Therefore greater intensity of CMA3 staining indicates protamine deficiency or aberrant chromatin packing. Chromomycin A3 staining requires a fluorescence microscope and is inexpensive and simple. Inter-observer subjectivity in establishing classification groups is an important limitation of this assay.

### **Toluidine blue**

Toluidine blue is a basic stain that stains phosphate residues of the sperm DNA with loosely packed chromatin and fragmented ends. When the stain attaches with lysine rich regions of histone it produces violet-bluish intense coloration whereas a pale-blue colour is produced with interactions with protamines in the chromatin. The sample can be analyzed using a ordinary microscope but intermediate coloration increases inter-user variability. Flow cytometer can also be used for evaluation. The results correlate well with SCSA and TUNEL.

### **In situ nick translation (ISNT)**

In situ nick translation incorporates biotinylated dUTP at ss DNA breaks with template-dependent DNA polymerase I. The measured parameter is number of fluorescent sperm which represent incorporated dUTP. The ISNT is simple, inexpensive and requires only a fluorescence microscope for analysis. The limitation of this technique is that since it uses a template dependent polymerase it can only quantify single stranded breaks and also has low sensitivity as compared to other techniques.

### **Terminal deoxy nucleotidyl transferase mediated dUTP nick end labeling assay (TUNEL)**

The TUNEL assay quantifies the incorporation of biotinylated dUTP at double strand breaks in DNA using a reaction catalyzed by template independent terminal deoxynucleotidyl transferase. The assay

scores fluorescent cells with labeled DNA. TUNEL can be applied in both bright field and fluorescence microscopy, and also using flow cytometry. Unlike ISNT, which quantifies only single stranded breaks TUNEL is sensitive for both single and double stranded breaks. TUNEL correlates well with SCSA, comet and toluidine blue.

### **Sperm chromatin dispersion (SCD)**

In SCD, the agarose embedded sperm are treated with a denaturing acid solution or alkaline solution to remove the nuclear proteins and to generate ss DNA from the nicks. The sperm are then subjected to lysis. The sperm with intact DNA produce a characteristic halo whereas in sperm with fragmented DNA the halo is either not observed or is minimal.

Sperm chromatin dispersion test is based on the ability of intact DNA deprived of chromatin proteins to loop around the sperm nucleus carcass<sup>[11]</sup>. As evident in Figure. 1, sperm 1 to 3 have intact DNA (non fragmented DNA), on treating them with denaturing agents the large non fragmented DNA fragments, coiled with the nuclear protein deprived remains of the nucleus leading to the formation of halo. In sperm 4 and 5 small DNA fragments in absence of nuclear proteins could not disperse and therefore have small or no halo.<sup>[12]</sup>

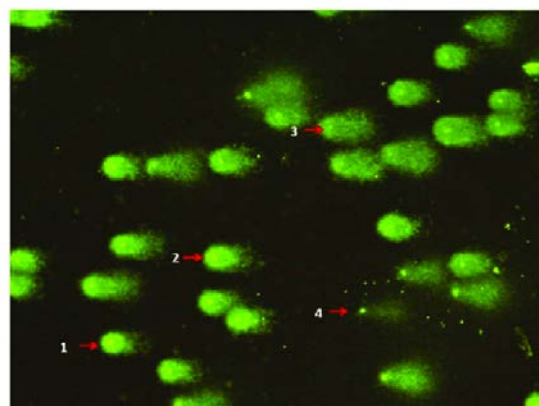


Fig. 1 DNA integrity by sperm chromatin dispersion test.

### **Single cell gel electrophoresis (SCGE) or comet assay**

In the comet assay, sperm are sandwiched between agarose layers and then lysed and electrophoresed.

The movement of fragmented DNA from a damaged sperm chromatin becomes visible as a comet with a tail. The assay is a microscopic variant of the normal electrophoresis in which the smaller DNA fragments migrate farther than the larger fragments. During the lysis step of comet assay the sulfhydryl groups in protamines are reduced which eases the movement of fragmented DNA on electrophoresis. The staining intensity and length of the comet tail represents the amount of migrated DNA, indicating different degrees of DNA fragmentation<sup>[13]</sup> (Fig. 2). Dyes such as propidium iodide, SYBR-Green and YOYO-1 Iodide are used for staining. The major limitation of this assay is that it is labor intensive, has observer subjectivity and requires experience to evaluate the comets. Expensive softwares are commercially available to analyze the comets.<sup>[14]</sup>

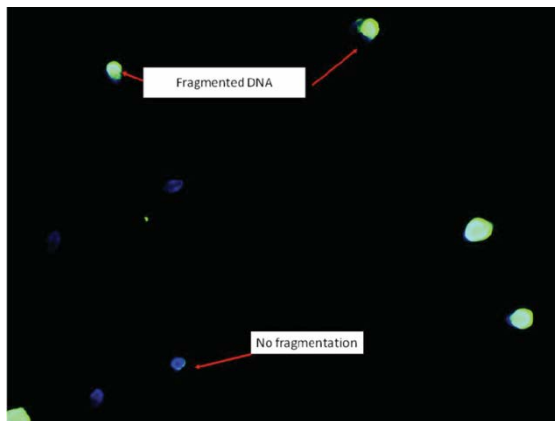


Fig. 2 Comet image of sperm with fragmented and non fragmented DNA

### Scientific aspects and significance of DNA integrity tests

Intact sperm genomic integrity is an essential prerequisite for the successful reproductive outcome in vivo and in vitro. DNA integrity is a relatively independent parameter of sperm quality that gives diagnostic and prognostic information complementary to, but distinct from, that obtained from conventional sperm analysis. Numerous studies have indicated that evaluation of the sperm DNA fragmentation is more predictive of rate of conception and successful pregnancy outcome.<sup>[17]</sup>

In a study by Evenson DP and Spano probability of fertilization in natural conception and in IUI was found to be close to zero if the proportion of sperm

cells with DNA damage exceeds 30% as detected by SCSA. Venkatesh S et al., 2011 proposed the threshold for DFI >30% in infertile men and also reported poor ART outcome when DFI was raised (>30%). Several other studies have reported a predictive threshold of 27% for successful pregnancy by IVF and ICSI as assessed by SCSA. If the DNA fragmentation is higher than 12% as detected by TUNEL assay low rates of pregnancy by IUI have been observed<sup>[18]</sup>. Sperm DNA damage is negatively correlated with embryo quality in IVF procedures<sup>[14]</sup>. In an ongoing study in our laboratory we found that men opting for ART had 39% sperm with DNA damage when quantified by SCD (preliminary unpublished results), which is higher than the clinical accepted threshold (27–30%) of DNA damage for successful pregnancy. In male partner of couples experiencing recurrent pregnancy loss it has been shown that sperm DNA damage is approximately 38% as compared to about 22% in fertile controls as detected by TUNEL. Similar results for pregnancy loss were also reported by Virro et al., 2014 using SCSA. Shamsi MB et al., 2016 reported DFI >24% in couples experiencing idiopathic RSA. Since the paternal genome gets activated between four to eight cell stage in human embryos<sup>[15]</sup>, therefore high DNA damage load presumably has no effect on the fertilization and manifests itself in the later stages of embryonic development<sup>[16]</sup>.

### Research laboratory aspects and significance of DNA integrity tests

Several assays used to evaluate DNA structure and integrity in human sperm have different setbacks and advantages when performed practically in a research laboratory. Their correlation with other assays and accuracy in predicting the chances of conception or outcome of a pregnancy depends on precision with which a technique detects the actual pathological DNA damage. So far no single test is competent enough to detect the actual DNA damage load with cent percent accuracy to predict the reproductive profile of the sperm.<sup>[18]</sup>

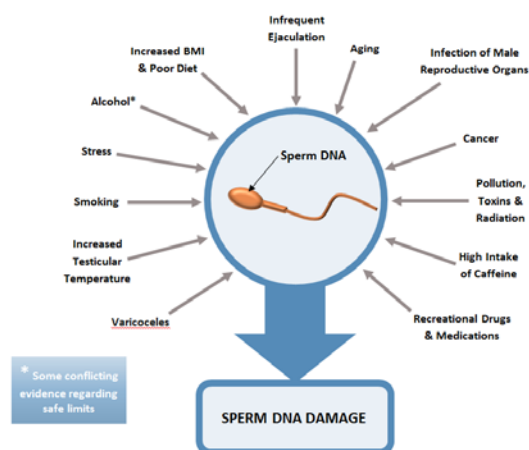


Fig: 3 Sperm DNA Fragmentation

The comet assay is exhaustively standardized by different research groups, each manipulating with the pH, temperature, salt concentrations, electrophoresis time etc. to produce a number of protocol variants with different sensitivities. The alkaline variant of the comet assay assesses both the single and double strand breaks and the alkali labile sites as compared to the neutral comet assay which measures only DSB's. Alkaline comet assay can detect damage equivalent to as few as 50 single-strand breaks (SSB) per cell. In the alkaline comet assay the sensitivity for the detection of single stranded breaks is provided by the use of alkaline lysis buffer which reverses DNA supercoiling and separates the DNA duplex into single strands. Additional sensitivity is provided by the use of proteinase k in the lysis buffer which removes protamine that otherwise impedes DNA migration through the agarose. During standardization of the sperm comet protocol in our laboratory we observed that this step is most crucial since protamination in sperm confer tight packing, and the lysis requires more stringent conditions compared to a somatic cell which has only histones as nuclear proteins.<sup>[19]</sup>

The ISNT relies on the access of DNA polymerase I to the genome, which correlates with level of protamination<sup>[20]</sup>. Higher the degree of incomplete protamination of the sperm genome greater is the degree of nick end labeling. ISNT incorporates a measure of chromatin condensation that in turn reflects the quality of the processes controlling the differentiation and maturation of the spermatozoa thus this assay has an additional diagnostic significance over other assays which reveal only

the degree of fragmentation in the sperm genome.<sup>[20]</sup>

TUNEL assay labels the blunt 3' OH ends of double strand breaks by the terminal deoxynucleotidyl transferase (TdT). The disadvantage of TUNEL assay is that since it does not include the lysis step, the accessibility of TdT to all the 3'OH ends in tightly packed sperm genome is limited.<sup>[21]</sup> As a result of which the suggested clinical thresholds is lower (18%) in different studies as compared with the established threshold of 27-30%. A recent study by Mitchell LA et al. 2018, has suggested an improvised TUNEL assay which provides solution to increase the accessibility of TdT and also incorporates the assessment of the vitality in the same flow cytometry assay. In the modified TUNEL assay the use of dithiothreitol (DTT) was suggested which breaks the disulphide linkage between adjacent protamine molecules, relaxing the chromatin and thereby allowing the TdT to access the DNA strand breaks within sperm nucleus.<sup>[22]</sup>

The SCSA has higher reproducibility and is clinically more validated than other techniques for DNA integrity assessment. The specificity of SCSA is lower than alkaline comet assay, ISNT or TUNEL since it detects DNA fragmentation, protamine content and disulphide cross linkage as well. SCSA can also quantify immature sperm since they have higher than normal stainability (high density stainability), though it can contaminate the fluorescence emitted from SSB and DSB thus generating an over estimation DNA fragmentation than actual.<sup>[24]</sup>

SCD like comet assay requires the sperm to be embedded in the agarose but without electrophoresis, thus it is comparatively fast and easy. Neither does it requires colour or fluorescence determination which makes its interpretation simple and without the use of any complex instrument. Since some sperm cells may have different nuclear sizes, it may lead to the variations in size of halo for sperm with equal fragmentation.<sup>[25]</sup>

Though the application of the DNA integrity assays in andrology laboratory are low but with increased use of micromanipulative reproductive techniques and with reports which implicate DNA damage as an important causal factor in infertility and

recurrent spontaneous abortions in large number of men, these test have gained significance.<sup>[26]</sup> It is necessary to consider several issues when evaluating studies of sperm DNA integrity. Moreover, the assays are incapable to evaluate the genes affected by fragmentation, which is significant since fragmentation in the inactive region of genome is not as detrimental as in the active regions of genome. This approach gives a higher level of percentage of sperm with DNA fragmentation and does not assess the actual level of pathological DNA fragmentation. Definitely, these drawbacks in these assays, have led to the ambiguity over establishing threshold values of sperm DNA fragmentation. However these assays have better diagnostic and prognostic value and far reaching clinical implications than traditional semen parameters.

## Conclusion

Sperm DNA damage is a frequent problem in infertile men. Although not yet routine, sperm DNA integrity is a good tool in investigation and treatment of infertility. Sperm DNA integrity is a marker of male fertility, alone or in combination with the WHO semen parameters, this in natural conception as well as in ART. Accumulated data shows that DNA damage correlates well with the reproductive potential of the sperm, its functional competence and therefore DNA damage assessment has a better predictive score than the conventional semen analysis. DNA integrity assays have clinical implications that are more informative and may be used to complement the classical parameters used in semen evaluation. Assisted conception techniques and in particular ICSI have a high probability of using a sperm, which otherwise would not achieve pregnancy spontaneously, so it becomes important to evaluate the quality of sperm genome. Moreover long term consequences of using sperm with compromised DNA integrity are unknown so it is imperative to improve the current assays or to develop a simplified novel DNA integrity tests which could be performed in a basic andrology laboratory and is robust enough to overcome the limitations of the presently used assays. Secondly, the modifications in the present assays or the development of a new assay should be oriented to non destructive determination of sperm reproductive potential so that the same germ cell could be used for fertilization; this would provide

safe and effective diagnostics in cases opting for assisted reproduction technology.

Until further research develops a new assay for sperm DNA integrity which is more accurate and has higher predictive value for pathological DNA damage and can exactly calculate DNA damage per sperm, supplementing conventional semen analysis with a combination of assays could help to establish the etiology of infertility. This would further help to direct the case specific treatment which could be given to infertile men. There are varied reports<sup>[27]</sup> on the efficiency of various antioxidant therapy in infertile men. Recent meta analysis<sup>[28-29]</sup> of these studies suggest that antioxidant therapy is beneficial and improves various indices of male fertility. However antioxidants should only be administered in cases with increased free radical levels as majority of enzymatic reactions in our body functions under redox conditions. It seems clear that ART, especially ICSI, are able to overcome the natural barriers of sperm DNA damage levels not compatible with fertilisation under natural circumstances. The consequences of this for the progeny are still not clear, however, it is also reason to concern regarding possible consequences of achieving a pregnancy using spermatozoa possessing DNA damage. So far no proven treatment of sperm DNA damage is available. Adequately powered, placebo-controlled trials of antioxidants in the prevention of sperm oxidative stress should be performed.

## References

1. WHO laboratory manual for the examination of human semen and semen-cervical mucus interaction. 4. Cambridge: Cambridge University Press; 2016.
2. WHO Laboratory manual for the examination and processing of human semen. 12th ed. Cambridge: Cambridge University Press; 2016.
3. Guzick DS, Overstreet JW, Factor-Litvak P, Brazil CK, Nakajima ST, Coutifaris C, et al. National Cooperative Reproductive Medicine Network. Sperm morphology, motility, and concentration in infertile and fertile men. *New Engl J Med.* 2001;345:1388-1393.
4. Guzick DS, Sullivan MW, Adamson GD, Cedars MI, Falk RJ, Peterson EP, et al. Efficacy of



treatment for unexplained infertility. *Fertil Steril*. 1998;70(2):207–213.

5. Liu DY, Baker HW. Evaluation and assessment of semen for IVF/ICSI. *Asian J Androl*. 2002;4(4):281–285

6. Berkovitz A, Eltes F, Lederman H, Peer S, Ellenbogen A, Feldberg B, et al. How to improve IVF-ICSI outcome by sperm selection. *Reprod Biomed Online*. 2016;12(5):634–638.

7. Lewis SE, Agbaje I, Alvarez J. Sperm DNA tests as useful adjuncts to semen analysis. *Syst Biol Reprod Med*. 2018;54(3):111–125.

8. Zini A. Are sperm chromatin and DNA defects relevant in the clinic? *Syst Biol Reprod Med*. 2016;57:78–85.

9. Host E, Lindenberg S, Smidt-Jensen S. DNA strand breaks in human spermatozoa: correlation with fertilization in vitro in oligozoospermic men and in men with unexplained infertility. *Acta Obstet Gynecol Scand*. 2000;79:189–193. 10.

10. Saleh RA, Agarwal A, Nelson DE, Nada EA, El-Tonsy MH, Alvarez JG, et al. Increased sperm nuclear DNA damage in normozoospermic infertile men: a prospective study. *Fertil Steril*. 2002;78:313–318.

11. Venkatesh S, Riyaz AM, Shamsi MB, Kumar R, Gupta NP, Mittal S, et al. Clinical significance of reactive oxygen species in semen of infertile Indian men. *Andrologia*. 2016;41(4):251–256.

12. Lewis SEM, Luke S. Clinical implications of sperm DNA damage. *Hum Fertil*. 2015;13(4):201–207.

13. Spano M, Bonde JP, Hjollund HI, Kolstad HA, Cordelli E, Leter G. Sperm chromatin damage impairs human fertility. The Danish First Pregnancy Planner Study Team. *Fertil Steril*. 2017;73:43–50.

15. Gorczyca W, Gong J, Darzynkiewicz Z. Detection of DNA strand breaks in individual apoptotic cells by the in situ terminal deoxynucleotidyl transferase and nick translation assays. *Canc Res*. 2006;53:2010–2015.

16. McVicar CM, McClure N, Williamson K, Dalzell LH, Lewis SE. Incidence of Fas positivity

and deoxyribonucleic acid. *Fertil Steril*. 2014 Mar;81 Suppl 1:767–74.

17. Soleimani M, Tavalae M, Aboutorabi R, Adib M, Bahramian H, Janzamin E, et al. Evaluation of Fas positive sperm and complement mediated lysis in subfertile individuals. *J Assist Reprod Genet*. 2018;27(8):477–482.

18. Iuliis GN, Thomson LK, Mitchell LA, Finnie JM, Koppers AJ, Hedges A, et al. DNA damage in human spermatozoa is highly correlated with the efficiency of chromatin remodeling and the formation of 8-hydroxy-20-deoxyguanosine a marker of oxidative stress. *Biol Reprod*. 2009;81:517–524.

19. Baker MA, Aitken RJ. Reactive oxygen species in spermatozoa: methods for monitoring and significance for the origins of genetic disease and infertility. *Reprod Biol Endocrinol*. 2015;3:67.

20. Cooke MS, Evans MD, Dizdaroglu M, Lunec J. Oxidative DNA damage: mechanisms, mutation, and disease. *FASEB J*. 2013;17:1195–1214.

21. Alvarez JG. Efficient treatment of infertility due to sperm DNA damage by ICSI with testicular sperm. *Hum Reprod*. 2015;20:2031–2032.

22. Cayli S, Jakab A, Ovari L, Delpiano E, Celik-Ozenci C, Sakkas D, et al. Biochemical markers of sperm function: male fertility and sperm selection for ICSI. *Reprod Biomed Online*. 2013;7(4):462–468.

23. Kovanci E, Kovacs T, Moretti E, Vigue L, Ward PB, Ward DC, et al. FISH assessment of aneuploidy frequencies in mature and immature human spermatozoa classified by the presence or absence of cytoplasmic retention. *Hum Reprod*. 2011;16(6):1209–1217.

24. Chang FW, Sun GH, Cheng YY, Chen IC, Chien HH, Wu GJ. Effects of varicocele upon the expression of apoptosis-related proteins. *Andrologia*. 2016;42(4):225–230.

25. Paul C, Povey JE, Lawrence NJ, Selfridge J, Melton DW, Saunders PT. Deletion of genes implicated in protecting the integrity of male germ cells has differential effects on the incidence of DNA breaks and germ cell loss. *PLoS One*. 2017;2(10):e989.

26. Rajender S, Avery K, Agarwal A. Epigenetics, spermatogenesis and male infertility. *Mutat Res.* 2016;727(3):62–71.

27. Giwercman A, Richthoff J, Hjollund H, Bonde JP, Jepson K, Frohm B, et al. Correlation between sperm motility and sperm chromatin structure assay parameters. *Fertil Steril.* 2003;80(6):1404–1412.

28. Gharagozloo P, Aitken RJ. The role of sperm oxidative stress in male infertility and the significance of oral antioxidant therapy. *Hum Reprod.* 2017;26(7):1628–1640.

29. Showell MG, Brown J, Yazdani A, Stankiewicz MT, Hart RJ. Antioxidants for male subfertility. *Cochrane Database of Systematic Reviews* 2016, Issue 1. Art. No.: CD007411.

