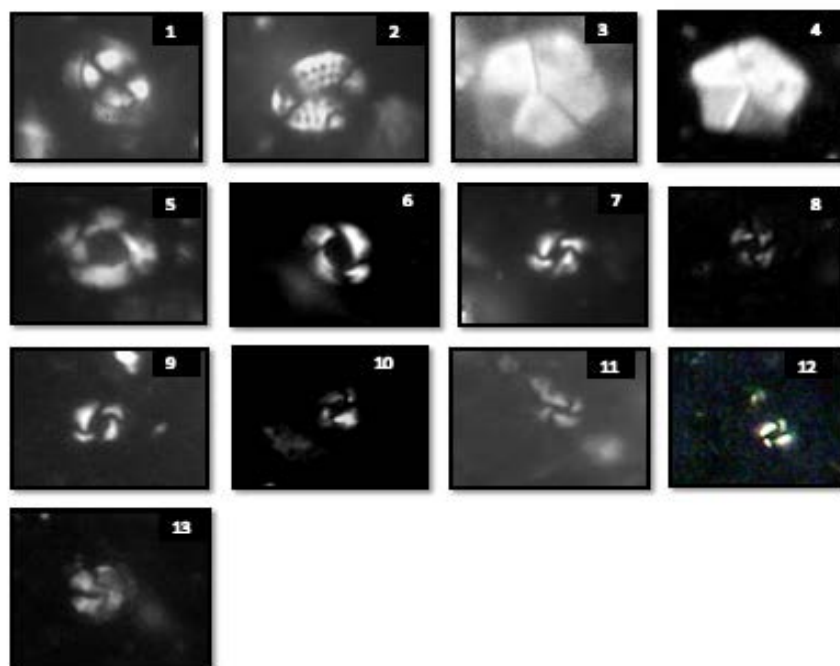


Nannofossil Plates (Well 2)



1. *Coccolithus pelagicus* @7200ft (Well 2)
2. *Pontosphaera multipora* @7120ft (Well – 1)
3. *Braarudosphaera bigelowii* @8490ft (Well – 2)
4. *Braarudosphaera bigelowii* @9520ft (Well – 1)
5. *Reticulofenestra pseudumbilicus*(>7microns) @7200ft (Well – 2)
6. *Reticulofenestra pseudumbilicus*(5 - 7microns) @7080ft (Well – 1)
7. *Reticulofenestra pseudumbilicus*(5 - 7microns) @7800ft (Well – 2)
8. *Reticulofenestra pseudumbilicus*(3 - 5microns) @7120ft (Well – 1)
9. *Reticulofenestra pseudumbilicus*(3 - 5microns) @7350ft (Well – 2)
10. *Reticulofenestra pseudumbilicus*(<3microns) @7080ft (Well – 1)
11. *Reticulofenestra pseudumbilicus*(<3microns) @7120ft (Well – 1)
12. *Reticulofenestra pseudumbilicus*(<3microns) @7120ft (Well – 1)
13. *Calcidiscus macintyreii* @7200ft (Well – 2)